

Aluminum Frame Assembly Instructions

1

Lay all parts on the floor and identify their purpose



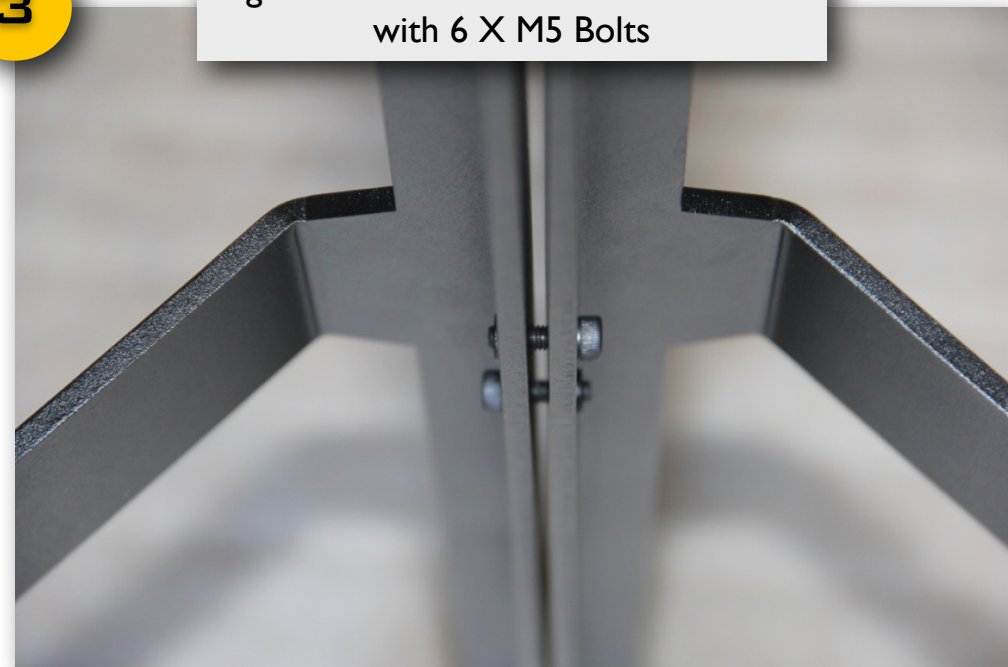
2

Hold side walls standing ready to be connected



3

Tighten the side walls one to the other with 6 X M5 Bolts



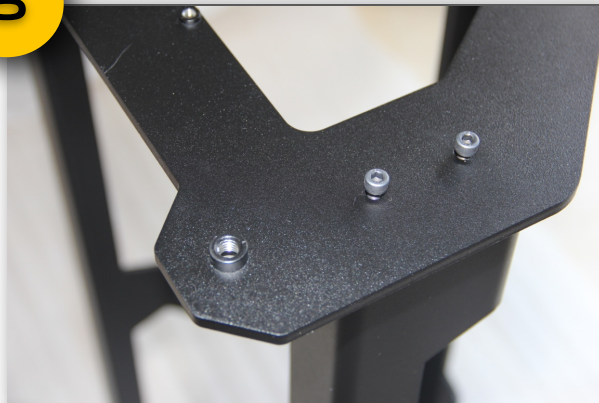
4

Turn the Side Walls upside down



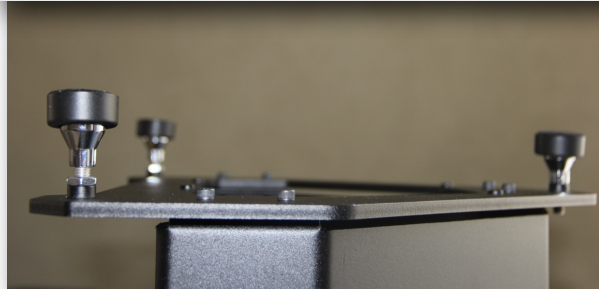
5

Place the Base with Studs facing up and tighten it to the side walls with 6 X M5 bolts



6

Screw in the SuperSpike into the M8 Stud. The back SupeSpike is all the way in while the front ones are half way in (to allow tilt)



7

Turn the Frame back on it's feet, the Frame is ready !

