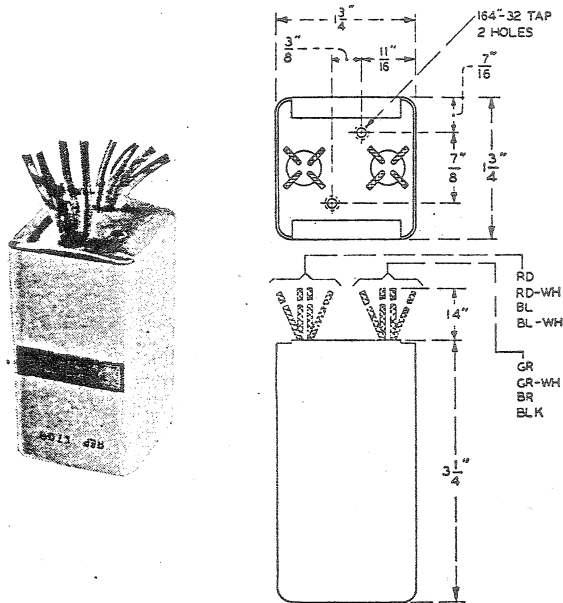


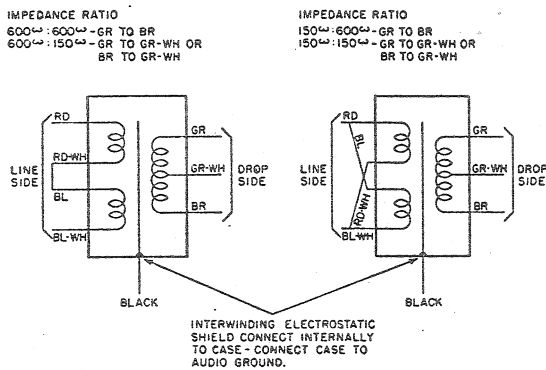
# Western Electric

at line circuit transfer points with complete assurance that the highest program quality is being maintained. It has all impedance ratio of 600:600 ohms.



### Typical Specifications

- Frequency Range:** 30-15,000 cycles.
- Maximum Power Capacity:** At 30 cycles. 0.247 watts (+24 dbm).
- Insertion Loss:** Approximately 1 db.
- Dimensions:** 1 3/4" x 1 1/4" x 3 1/4".
- Weight:** 1 1/4 pounds.
- Mounting:** Flat base for flat plate or chassis mounting. Two threaded mounting holes take 8-32 screws.
- Finish:** Gray enamel.



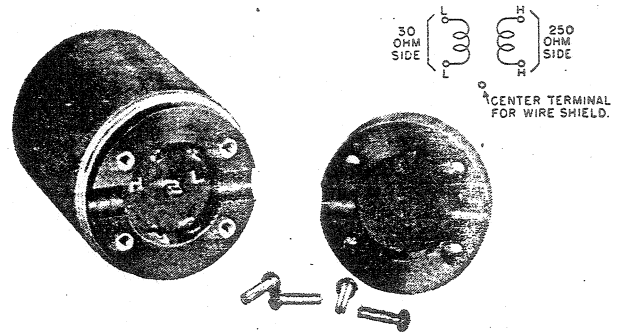
### 171A REPEATING COIL

Used with 9 type Reproducer see page 22 for detailed information.

### 172A REPEATING COIL

An exceptionally high quality impedance matching device for use in low level circuits particularly between a microphone and amplifier. It employs screw type terminals and is adaptable for connection in the microphone cordage or it

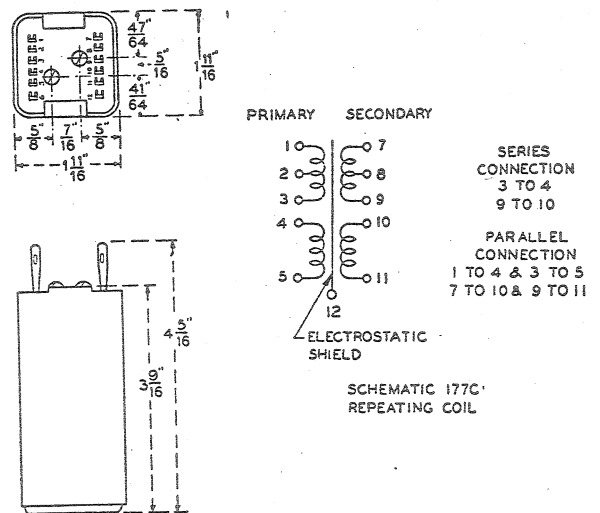
may be mounted on the associated amplifier. A plastic cover, illustrated below, protects and insulates the coil. The cord slots grip the cord and relieve the strain on the terminals and terminal plate. The 172A will transmit equally well in either direction.



### Typical Specifications

- Frequency Range:** 30-15,000 cycles.
- Maximum Power Capacity:** At 30 cycles 0.045 watts (+16 dbm).
- Insertion Loss:** Approximately 1 db.
- Dimensions:** 1 3/4" diameter x 2-25/32" long.
- Weight:** 12 ounces.
- Mounting:** Use connected in microphone cord or mount on flat surface by means of loop bracket.
- Case:** Magnetic shielding permalloy metal.
- Finish:** Black.

### 177C REPEATING COIL



Series Connection		Input	Output	Center Tap
Primary	3 to 4	1-5		3 (or 4)
Secondary	9 to 10		7-11	9 (or 10)
Parallel Connection		Input	Output	Center Tap
Primary	1 to 4, 3 to 5	1-3		8
Secondary	7 to 10, 9 to 11		7-9	2